

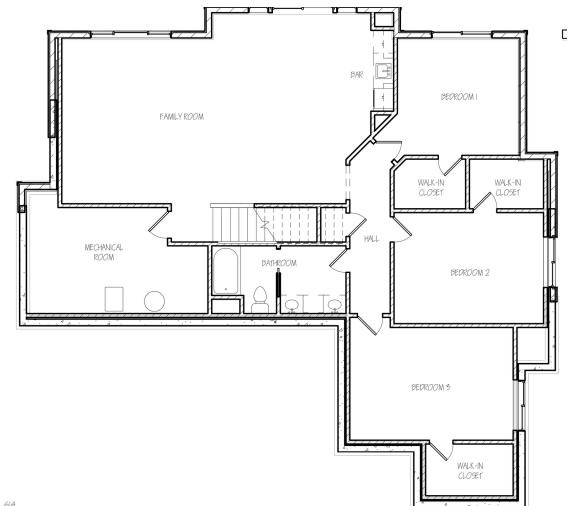
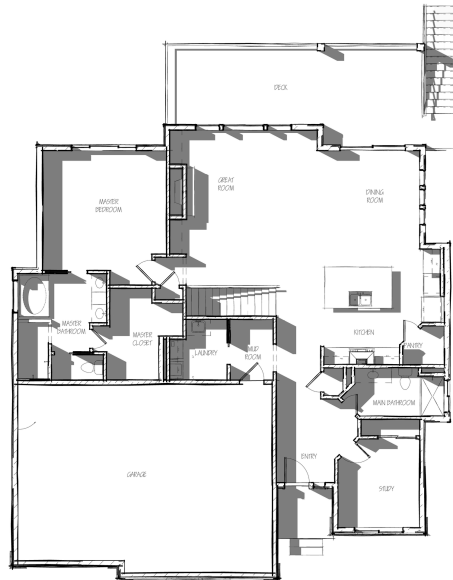


ABOUT THE WHITTIER FLOOR PLAN:

Everything you've hoped for! A spectacular main floor layout offering an optimized main floor primary bedroom fully equipped to satisfy those looking for the space they desire. You're welcomed in by a comfortable wide entry with study and main bathroom. The kitchen carefully looks over the great room which showcases a gas fireplace complete with built ins and stone. You'll love the open rail leading to the finished lower level. The oversized solid-stone kitchen island will provide endless memories of gatherings and satisfy the passionate cook. The lower level boasts three more bedrooms, family/game room and wet bar. A lot to love with the Whittier!

MAIN FLOOR: 1,809 SQ/FT
 LOWER LEVEL: 1,585 SQ/FT
 TOTAL: 3,394 SQ/FT

WIDTH: 53'
 DEPTH: 65'



Actual floor plan may vary from pictured plan. Areas and dimensions are approximate. Contact us for list of included features.