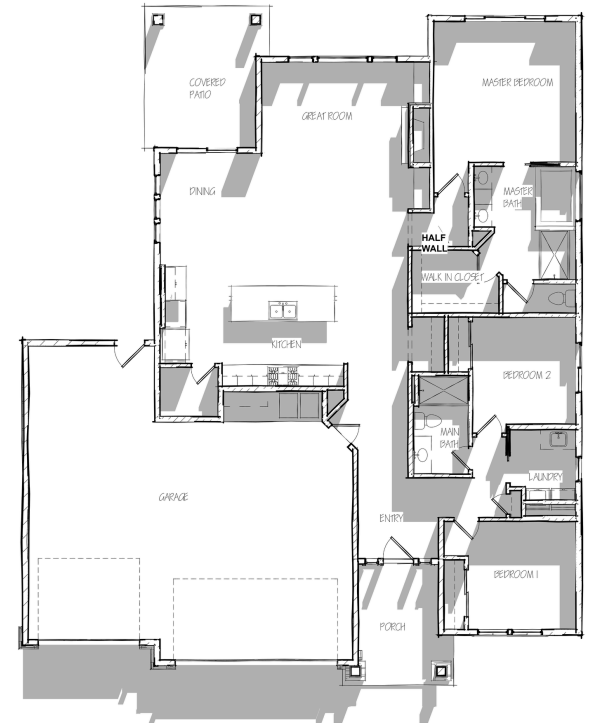




ABOUT THE SUMMIT FLOOR PLAN:

An open design with a cozy great room, lots of light and volume! High-end features that won't disappoint like oversized linear kitchen island, gas range, gas fireplace with built-ins, covered back patio off the dining area and you'll love the primary bedroom layout! This home offers a highly desirable modern flare and built with a no-step entry when possible!



Actual floor plan may vary from pictured plan. Areas and dimensions are approximate. Contact us for list of included features.

MAIN FLOOR: 1,870 SQ/FT
TOTAL: 1,870 SQ/FT

WIDTH: 55'
DEPTH: 65'