



4 Bed

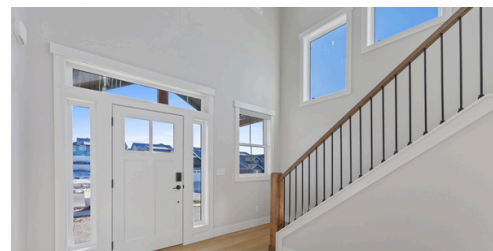


2.5 Bath



3 Car Garage

4,302 SQ/FT

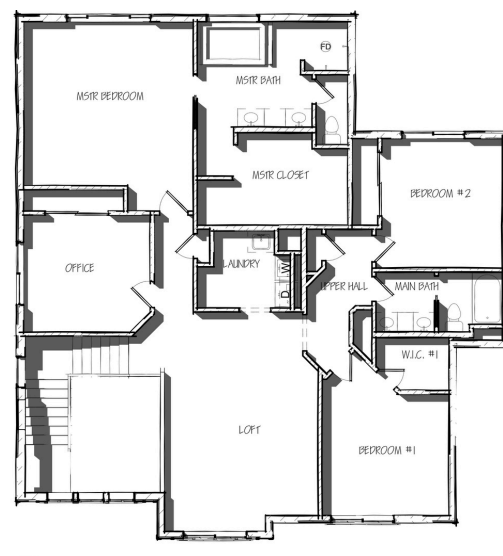
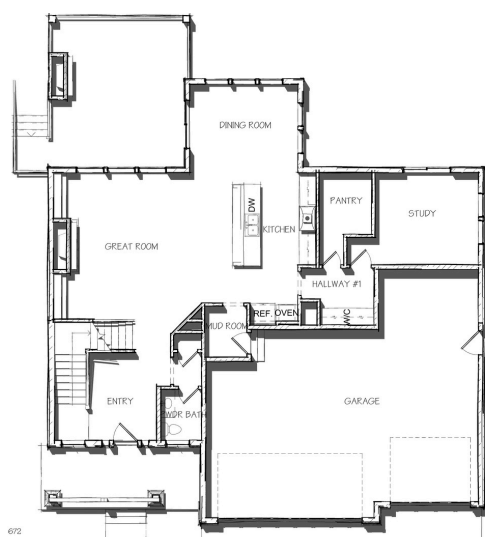


## ABOUT THE REDMOND FLOOR PLAN:

A spacious, practical and beautiful two-story home with soaring open foyer! In addition to the large kitchen, dining area, and great-room, the main floor also has a flex room which could be used for any number of purposes. The upper level is efficiently designed with four bedrooms including the luxurious primary suite, loft and laundry. You'll love the covered rear patio, oversized garage and grand entry with open banister railings for the L-shaped staircase. This home is perfect for anyone who wants room to play, work, live and grow!

MAIN FLOOR: 1,323 SQ/FT  
 UPPER LEVEL: 1,723 SQ/FT  
 OPTIONAL BSMT: 1,324 SQ/FT  
 TOTAL: 4,302 SQ/FT

WIDTH: 54'  
 DEPTH: 63'



Actual floor plan may vary from pictured plan. Areas and dimensions are approximate. Contact us for list of included features.