



3 Bed

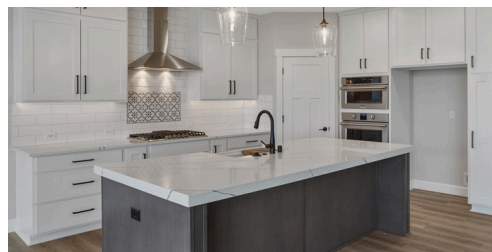
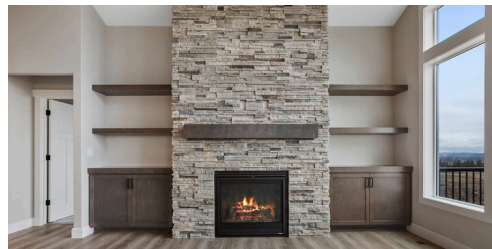


2 Bath



3 Car Garage

3,198 SQ/FT

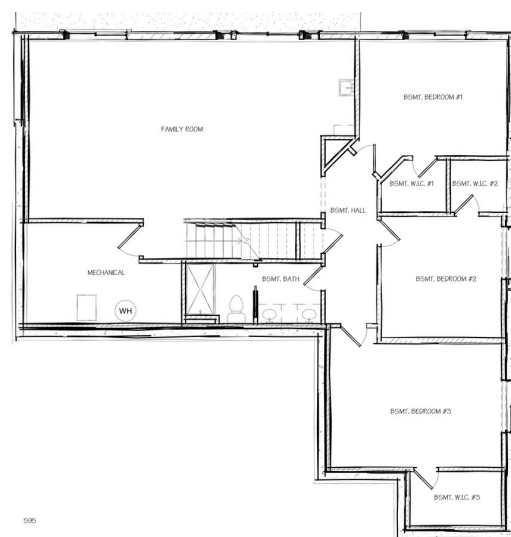
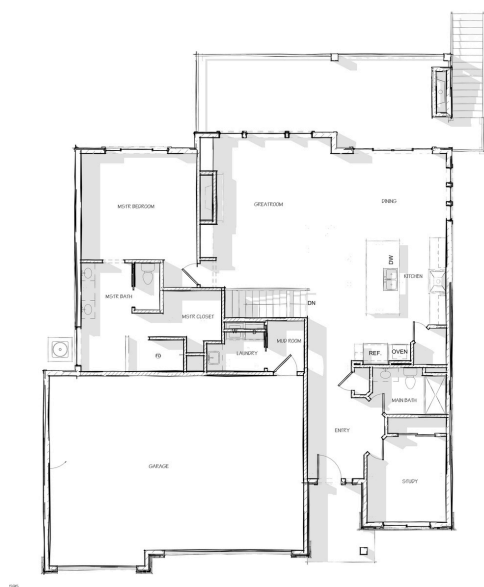


## ABOUT THE HUDSON FLOOR PLAN:

All the bells and whistles! The Hudson is a popular choice for those downsizing without giving up all you love. An open and spacious floor plan with all the needed elements for living on the main floor. You are welcomed in by a comfortable wide entry with study and main bathroom. The kitchen carefully looks over the great room which showcases a gas fireplace compete with built ins and stone. The primary suite is close by an features generously sized walk-in closet, soaking tub, and separate water closet. Endless possibilities in the lower level make this home a real contender!

**MAIN FLOOR:** 1,599 SQ/FT  
**BONUS FLOOR:** 1,599 SQ/FT  
**TOTAL:** 3,198 SQ/FT

**WIDTH:** 51'  
**DEPTH:** 65'



Actual floor plan may vary from pictured plan. Areas and dimensions are approximate. Contact us for list of included features.