



KITCHEN



GREAT ROOM



ENTRY



CAMDEN HOMES INC.

MAPLE RIDGE

19650 E. SHANNON AVE.

\$274,850



- 4 Bedroom
- 2.5 Bath
- Study
- Kitchen Island
- Great Room
- 2 Car Garage

2,660 FINISHED S.F.
1,016 UNFINISHED S.F.

Amenities include hardwood floors, granite counters with full tile backsplash in kitchen, kitchen island, gas fireplace, stained wood trim package, solid wood doors, open floor plan, and large master suite.

For Information Contact:
Joe Kramer
509-879-5462
or visit



WWW.MYCAMDENHOME.COM

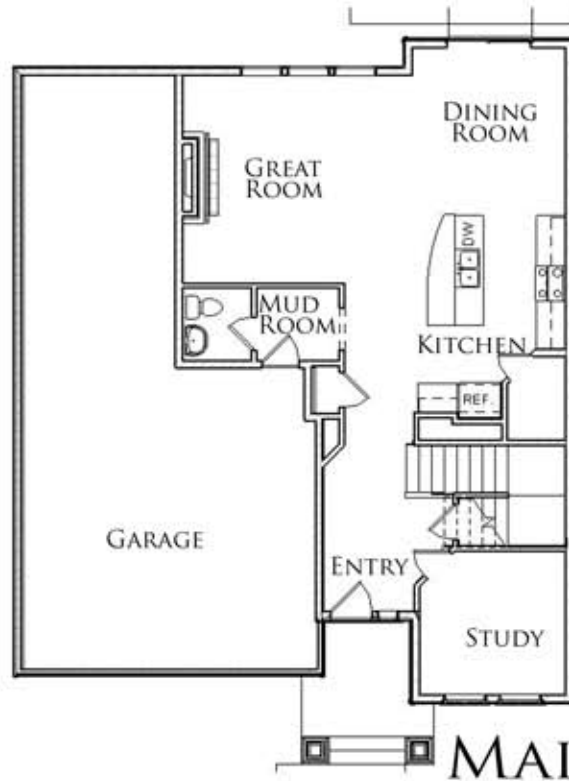


*Prices, incentives, floor plans, square footage, elevations & specifications may change without notice. These illustrations are provided to help our customers and clients visualize living in their new home and are not warranted to be exact.



CAMDEN HOMES INC.

MAPLE RIDGE

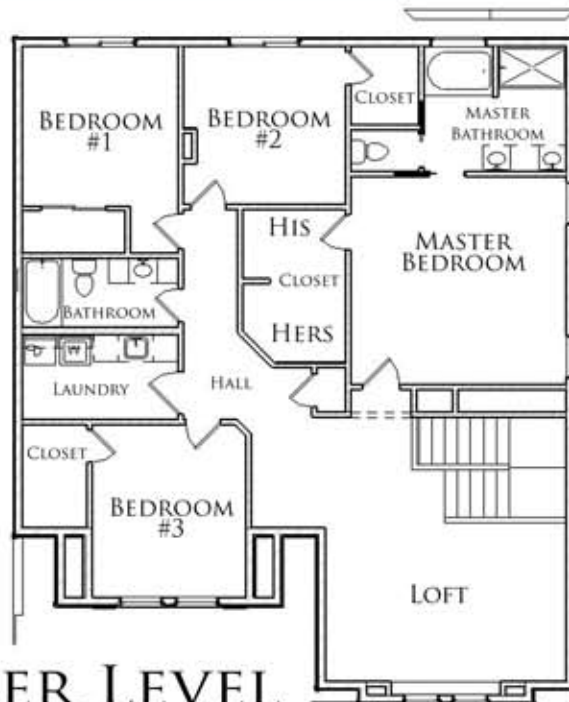


MAIN LEVEL



For Information Contact:
Joe Kramer
509-879-5462
or visit

WWW.MYCAMDENHOME.COM



UPPER LEVEL