



KITCHEN



GREAT ROOM



ENTRY



CAMDEN HOMES INC.



SOLD

# BAINBRIDGE

19671 E. SHANNON AVE.

\$259,850



- 4 Bedroom
- 2.5 Bath
- Study
- Kitchen Island
- Great Room
- 2 Car Garage

2,412 FINISHED S.F.  
1,087 UNFINISHED S.F.

Amenities include granite counters with full tile backsplash in kitchen, kitchen island, stainless steel appliances, gas fireplace, stained wood trim package, solid wood doors, open floor plan, large master suite.

For Information Contact:  
Joe Kramer  
509-879-5462  
or visit



WWW.MYCAMDENHOME.COM



\*Prices, incentives, floor plans, square footage, elevations & specifications may change without notice. These illustrations are provided to help our customers and clients visualize living in their new home and are not warranted to be exact.



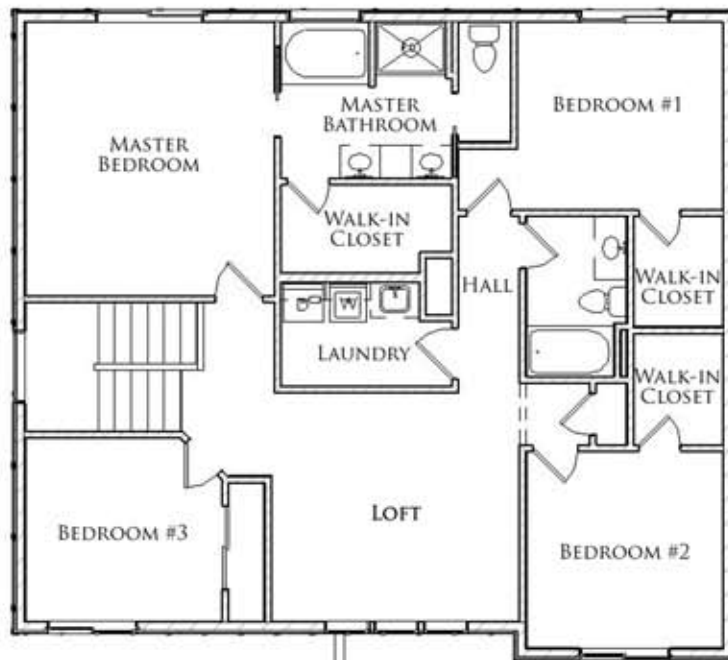
CAMDEN HOMES INC.

BAINBRIDGE

### MAIN LEVEL



### UPPER LEVEL



For Information Contact:  
Joe Kramer  
509-879-5462  
or visit

[WWW.MYCAMDENHOME.COM](http://WWW.MYCAMDENHOME.COM)



\*Prices, incentives, floor plans, square footage, elevations & specifications may change without notice. These illustrations are provided to help our customers and clients visualize living in their new home and are not warranted to be exact.