



CH
CAMDEN HOMES INC.



SAHALEE

1909 S. CLOVER

\$304,850



- 3 Car Garage
- 4 Bedrooms
- 2.5 Bath
- Master Suite
- Formal Dining
- Study
- Great Room
- Loft
- Unfinished basement

3,000 FINISHED S.F.
1,245 UNFINISHED S.F.

Amenities include hardwood floors, upgraded carpet, granite slab countertops with full tile backsplash in kitchen, full unfinished basement, beautiful wood trim with solid wood doors, large bedrooms with walk-in closets, large homesite, great neighborhood. This home also includes a drop-in soaker tub with tile deck in the master bathroom, dual sinks in the upper bathroom, and a 90% efficient gas furnace.

For Information Contact: **RE/MAX**
Joe Kramer
509-879-5462 of Spokane
or visit
WWW.MYCAMDENHOME.COM





CAMDEN HOMES INC.

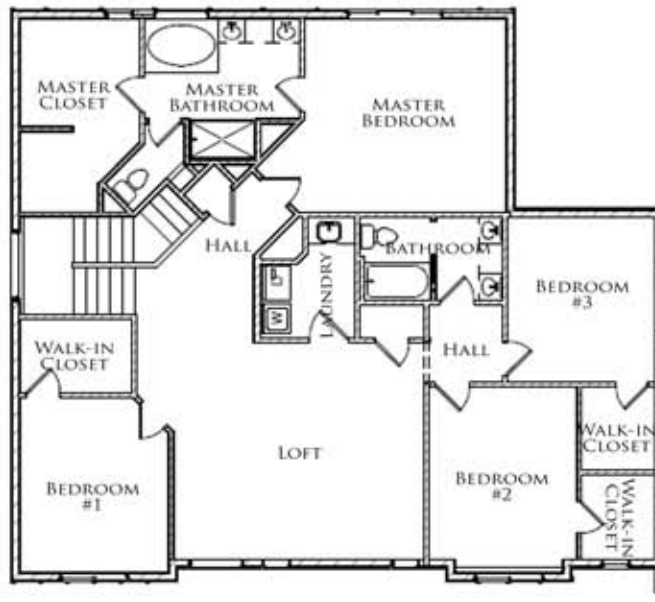
SAHALEE



RE/MAX of Spokane

For Information Contact:
Joe Kramer
509-879-5462
or visit

WWW.MYCAMDENHOME.COM



UPPER LEVEL



*Prices, incentives, floor plans, square footage, elevations & specifications may change without notice. These illustrations are provided to help our customers and clients visualize living in their new home and are not warranted to be exact.